

Epson® SureLab® D1070/D1070DE

Start Here

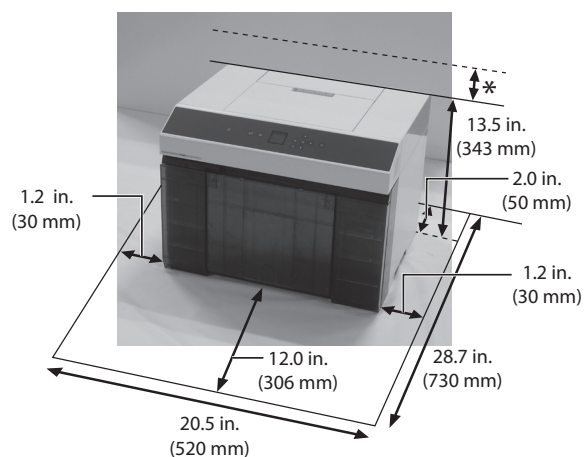
IMPORTANT: Before using this product, make sure you read these instructions and the online *Safety Instructions*.

Choose a location for the printer

Choose a location for the printer that is near a wall outlet where the power cord can be easily unplugged. Avoid places subject to rapid changes in temperature and humidity. Also keep the printer away from direct sunlight, strong light, or heat sources.

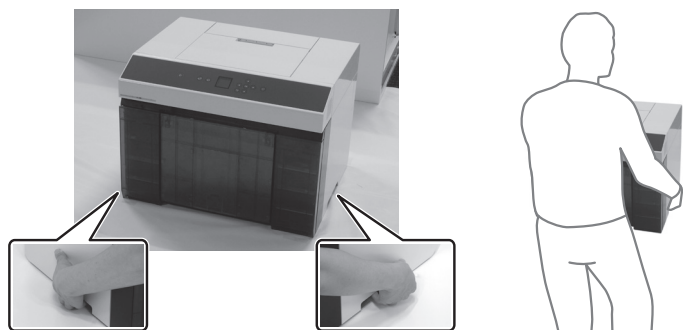
For the environmental specifications for your printer, see the online *User's Guide*. Make sure the environmental conditions are suitable for the loaded paper as well.

Make sure to place the printer on a flat, stable surface with enough space on all sides.



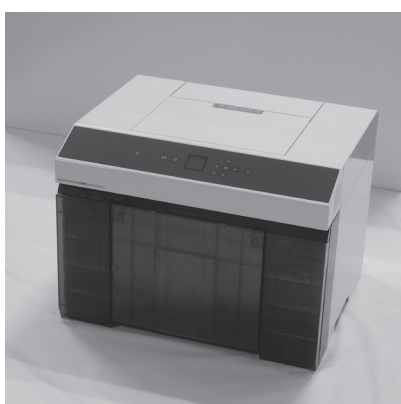
* The rear paper feed requires an additional vertical clearance of 7.0 inches (180 mm) when inserting letter- or A4-sized paper.

Caution: When lifting the printer, carry it from the front of the printer as shown. Carry the printer using the indicated handholds or your fingers may be injured when setting the printer down.



Unpack

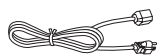
1 Make sure you have these items:



Printer



Limited warranty



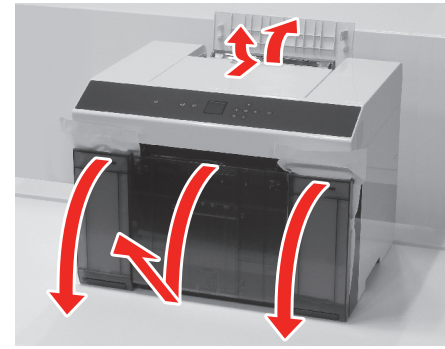
Power cord

Note:

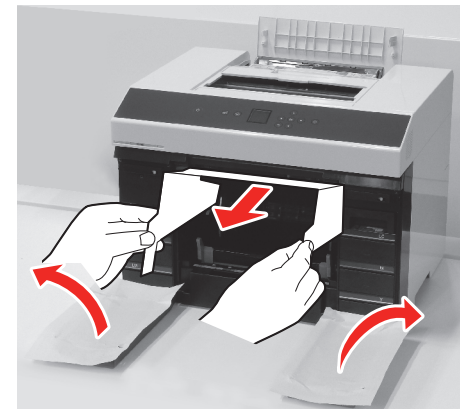
- Ink supply units (ink packs) are not included.
- The SureLab D1070DE includes a duplex unit in a separate box.

2 Remove all of the packaging materials and tape from the outside of the printer.

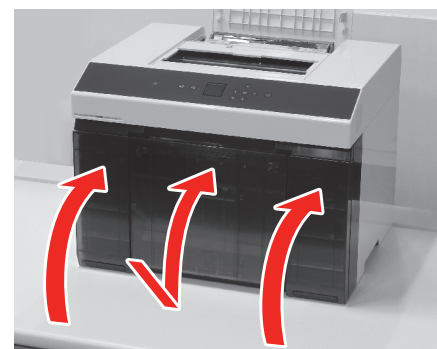
3 Open the covers and remove all of the protective tape from inside the printer.



4 Remove the packaging material from the roll paper spindle and the material inside the ink pack covers.

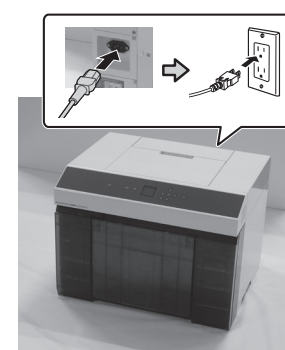


5 Close all covers on the printer.

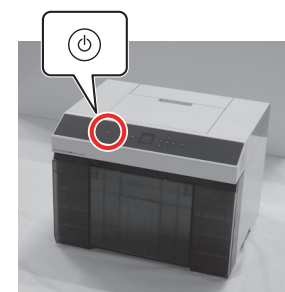


Turn on and configure

1 Make sure the printer covers are closed, and connect the power cord.



2 Press the power button on the printer.



3 Follow the instructions on the LCD screen to select your printer settings. When you see a screen directing you to install the ink packs, go to the next section.

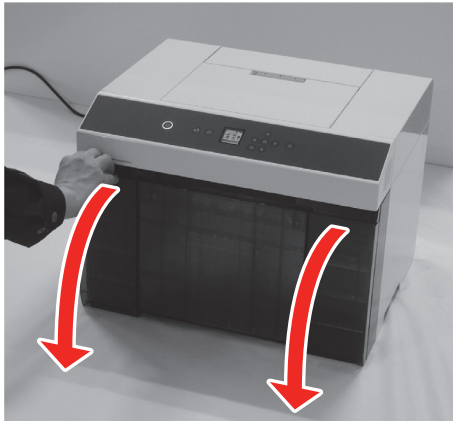
Install the ink supply units (ink packs)

Follow the instructions on the LCD screen to install the ink packs and charge the ink. The steps involved are shown below.

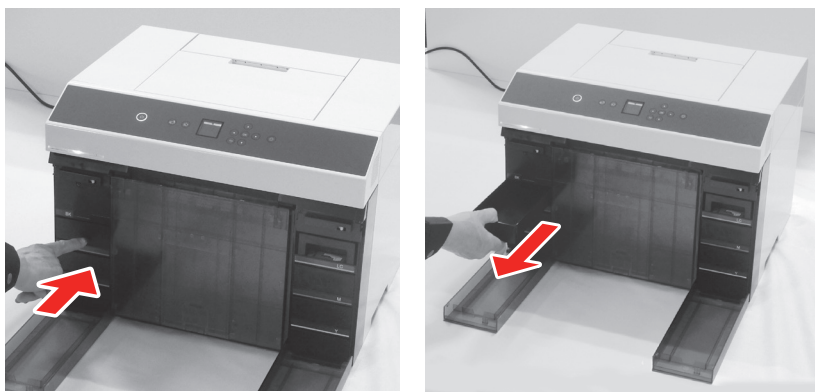
Caution: Keep the ink packs out of the reach of children and do not drink the ink.

Note: Make sure you have ink packs available before starting the setup process.

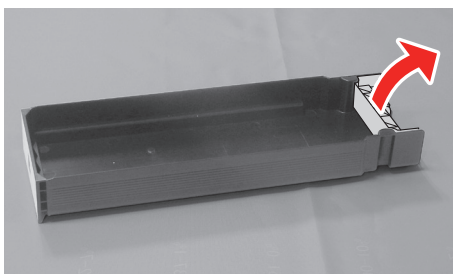
- 1 Open the ink pack covers.



- 2 Press an ink pack tray to release it, then pull the tray out.

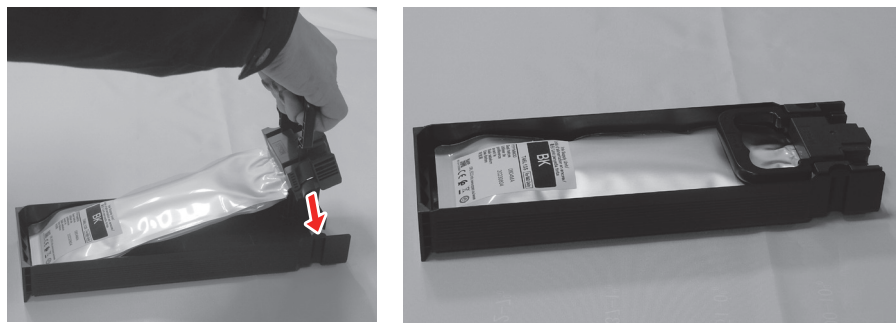


- 3 Remove and discard the protective piece from the ink pack tray.



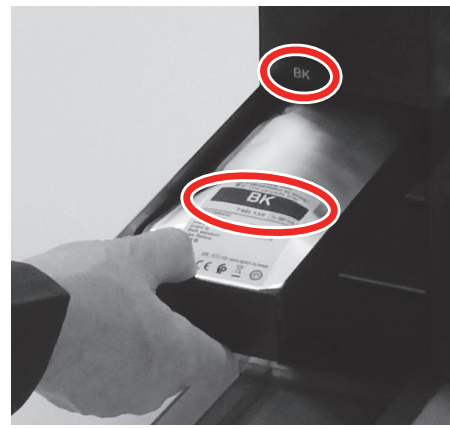
Note: Liquid may have dripped into the ink trays. This is excess fluid discharged from the ink nozzles and does not indicate a malfunction.

- 4 Move the handle forward, place the ink pack into the ink pack tray until it clicks, then move the handle back to its original position.



Note: Make sure the ink pack is fully inserted and level with the top of the ink pack tray.

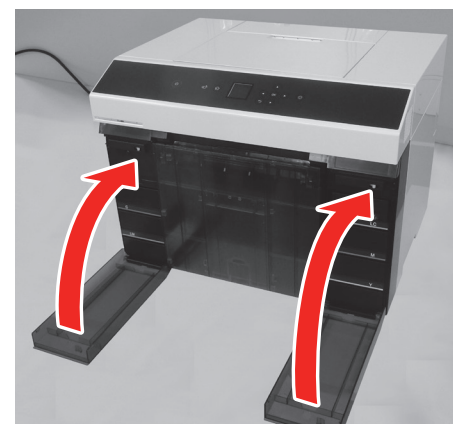
- 5 Insert the ink pack tray into the printer.



Note: The ink packs are keyed to fit into the correct color slot. If you cannot insert the ink pack tray all the way, do not force it. Make sure the ink pack color matches the color slot on the product.

- 6 Repeat steps 2 to 5 to install the other ink packs.

- 7 After all of the ink packs are installed, close the ink pack covers.



- 8 Press the **OK** button on the printer to start charging the ink. After the ink charging is complete, press the **OK** button again to display the home screen.

Caution: While the ink is charging, do not turn off or unplug the printer, open the ink tray covers, or remove the scrap paper box.

Note: The first time you install ink packs, the printer uses some ink to charge the printing system, so print yields may be lower with the first packs. Subsequent ink packs will last for their full rated yield.

Load paper

The printer can be used with both roll paper and cut sheets. For instructions on loading cut sheets or additional information on loading roll paper, see the online *User's Guide*.

- 1 Make sure the printer is on and that the LCD screen indicates that the printer is ready to print.

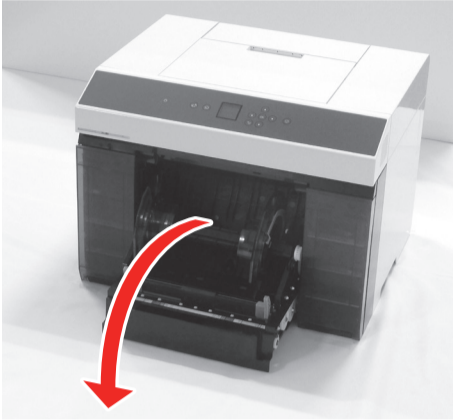
- 2 Remove the scrap paper box.



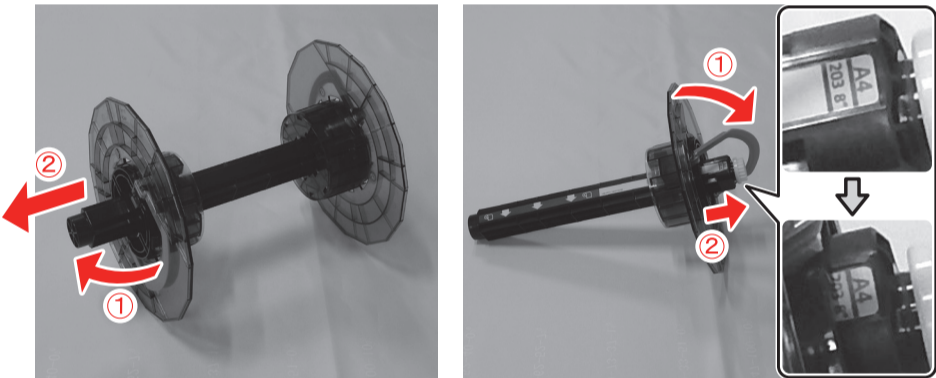
- 3 Grip the handle to release the roll paper unit and pull it towards you until it stops.



- 4 Remove the roll paper spindle and set it aside.



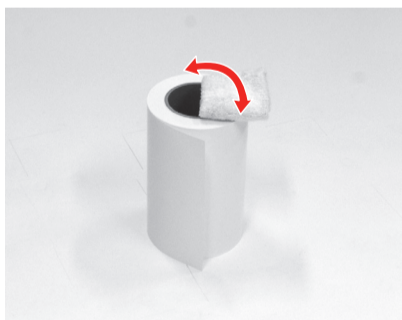
- 5 Raise the handle on the media edge guide that is not connected to the gear and remove the edge guide as shown. Adjust the position of the other media edge guide by lifting the handle and sliding the edge guide along the spindle to match the width of the roll paper.



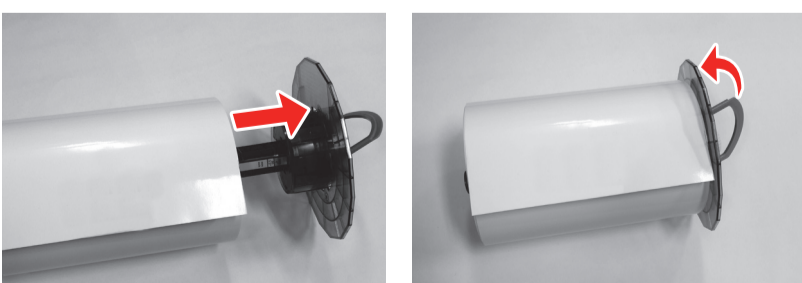
- 6 Remove the paper roll from its packaging. Remove any tape and protective paper from the end of the roll.

Note: Wear gloves to avoid marking the paper with dirt or oils from your hands.

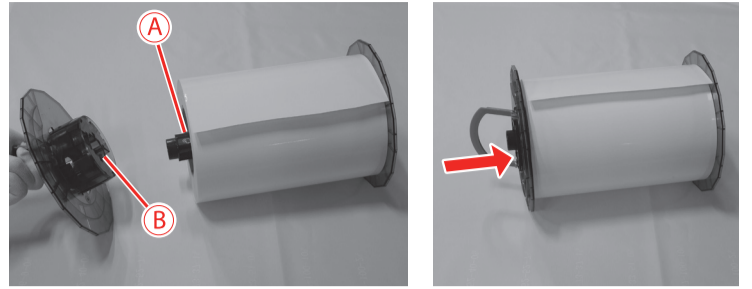
- 7 Stand the paper roll on its side and wipe the edge of the paper roll with a soft, clean cloth several times to remove any dust. Flip the paper roll and repeat the process.



- 8 Insert the paper roll onto the spindle as shown, then lower the handle. Make sure there is no gap between the media edge guide and the roll paper.



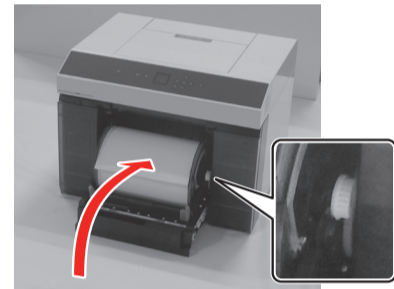
- 9 Match the orientation of the oval end of the spindle (A) with the media edge guide (B). Insert the media edge guide onto the spindle and make sure there are no gaps between the edge of the roll paper and the media edge guides.



- 10 Lower the handle to lock the media edge guide in place.



- 11 Place the spindle into the printer with the gear on the right side.



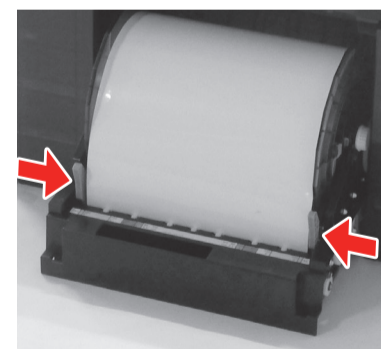
Note: Do not use the handles to lift the roll paper or the paper may fall off the spindle.

- 12 Feed the leading edge of the roll paper into the paper feed slot until you hear a beep.



Note: Make sure the leading edge is cut straight across to avoid paper feeding problems.

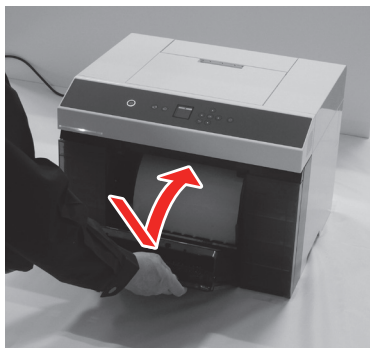
- 13 Adjust the media edge guides to match the width of the roll paper.



- 14 Push the roll paper unit all the way into the printer.



- 15** Reattach the scrap paper box. The paper loads into the printer and a message appears on the LCD screen.



- 16** When the LCD screen displays the paper type, press the **OK** button if the type is correct, or select **Change** and press **OK** to select a different paper type.

Note: For instructions on adding a new paper type, see the online *User's Guide*.

- 17** Attach and extend the output tray.



Install software

Note: An Internet connection is required to obtain the product software.

Firmware Update Notice: The printer is designed to work only with genuine Epson branded ink packs. Other brands of ink packs and ink supplies are not compatible and, even if described as compatible, may not function properly or at all. Epson periodically provides firmware updates to address issues of security, performance, minor bug fixes and ensure the printer functions as designed. These updates may affect the functionality of third-party ink. Non-Epson branded or altered Epson packs that functioned prior to a firmware update may not continue to function.

- 1** Make sure the product is **NOT CONNECTED** to your computer.
- 2** Download and run your product's software package. For the latest software, visit <http://epson.com/support> (U.S.), <http://epson.ca/support> (Canada), or <http://latin.epson.com/support> (Caribbean) and search for your product.
- 3** Follow the instructions on the screen to run the setup program.
- 4** If prompted, connect a USB 2.0 cable to the printer and your computer.

Using the Maintenance Tool

Open the Maintenance Tool software utility to perform the following maintenance tasks:

- **Diagnostic Cleaning** – Detects clogged nozzles and automatically performs cleaning
- **Nozzle Check** – Checks for clogged nozzles
- **Forced Cleaning** – Performs manual cleaning

Note: See the online *User's Guide* for details on using the Maintenance Tool utility.

The Symbols on the Product

The symbols on this Epson product are used in order to ensure safety and proper use of the product and to prevent danger to customers and other persons, and property damage. The symbols indicate the meaning below. Be sure that you completely understand the meaning of symbols on the product before using it.

⏻	~
Stand-by	Alternating Current

Product support

Epson technical support

Visit <http://epson.com/support> (U.S.), <http://epson.ca/support> (Canada), or <http://latin.epson.com/support> (Caribbean) and search for your product to download software and utilities, view manuals, get FAQs, or contact Epson.

Epson provides technical support and information on the installation, configuration, and operation of professional printing products through your Epson limited warranty. Dial (888) 377-6611, 7 AM to 4 PM, Pacific Time, Monday through Friday. Days and hours of support are subject to change without notice. Before you call, make sure you have your:

- Printer serial number: _____
- Proof of purchase and date: _____

Note: If you experience difficulty with the toll-free line, call (562) 276-1305.

Online guides

Instructions for using your printer and maintenance tools.

Recycling

Epson offers a recycling program for end of life hardware and ink packs. Please go to <http://epson.com/recycle> (U.S.) or <http://epson.ca/recycle> (Canada) for information on how to return your products for proper disposal.

Need ink or paper?

Ensure brilliant results with Epson specialty and plain papers, engineered specifically for Epson printers. Find Epson papers and Epson Genuine Ink at <http://epson.com> (U.S. sales) or <http://epson.ca> (Canadian sales) and at Epson authorized resellers. Call 800-GO-EPSON (800-463-7766).

Epson SureLab D1070/D1070DE replacement ink packs

Color	Part number
● Black	T46J120
● Cyan	T46J220
● Magenta	T46J320
● Yellow	T46J420
● Light Cyan	T46J520
● Light Magenta	T46J620

EPSON and SureLab are registered trademarks and EPSON Exceed Your Vision is a registered logomark of Seiko Epson Corporation.

General Notice: Other product names used herein are for identification purposes only and may be trademarks of their respective owners. Epson disclaims any and all rights in those marks.

This information is subject to change without notice.

© 2021 Epson America, Inc., 11/21

Printed in U.S.A.

CPD-61555