

Start Here

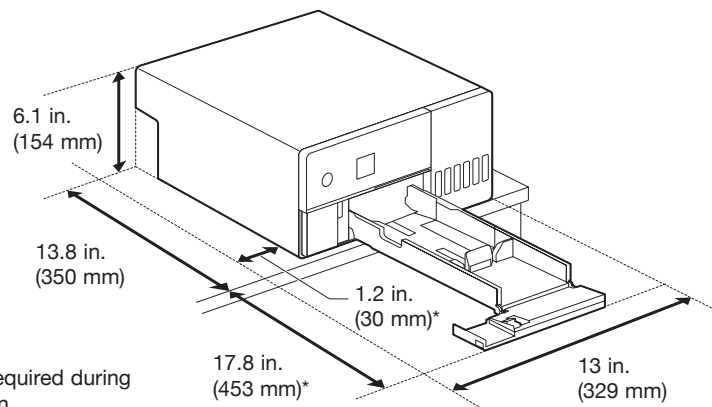
IMPORTANT: Before using this product, make sure you read these instructions and the safety instructions in the online *Notices*.

Choose a location for the printer

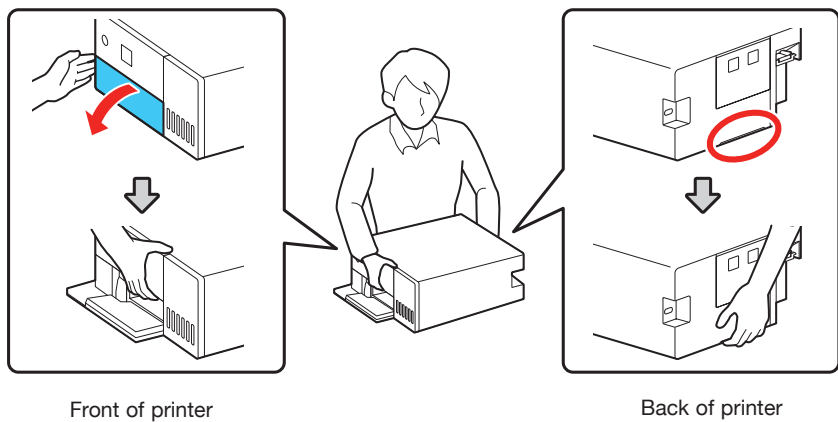
Choose a location for the printer that is near a wall outlet where the power cord can be easily unplugged.

Avoid places subject to rapid changes in temperature and humidity. Also keep the printer away from direct sunlight, strong light, or heat sources. Choose a location with a temperature of 50 to 95 °F (10 to 35 °C) where environmental conditions are suitable for the loaded paper even if the printer is placed on a rack. For the environmental specifications for your printer, see the online *User's Guide*.

Place the printer on a flat, stable surface with enough space on all sides and that is capable of supporting approximately 15.4 lb (7 kg).

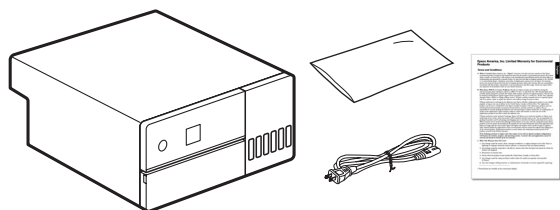


Caution: When lifting the printer, place your hands in the areas shown below. Do not hold the printer by any other areas or your fingers may get injured when setting the printer down.



Unpack

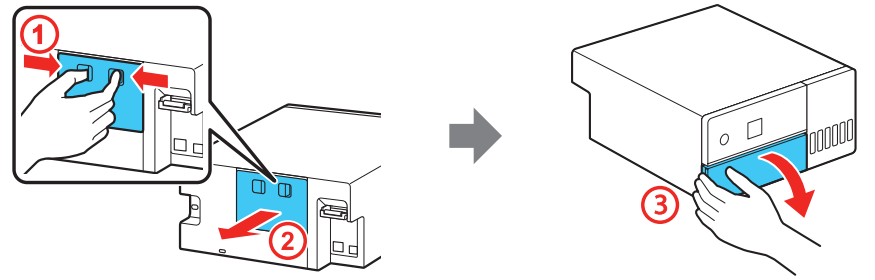
1 Make sure you have these items:



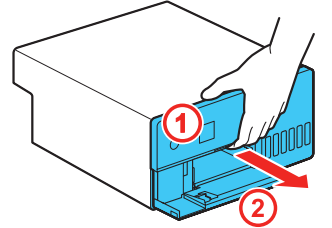
Note: Ink bottles are not included with the printer.

2 Remove all of the packaging materials and tape from inside and outside of the printer.

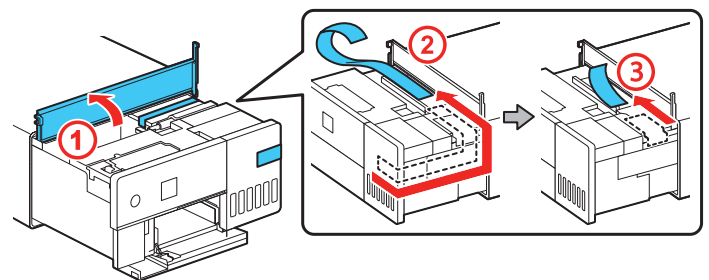
3 Remove the rear cover, then open the front cover.



4 Hold the control panel as shown and pull out the interior unit until it stops.



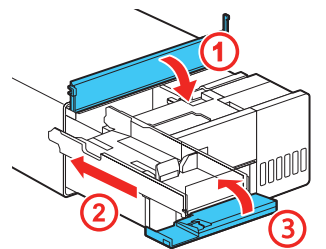
5 Open the inner cover, then remove the tape as shown.



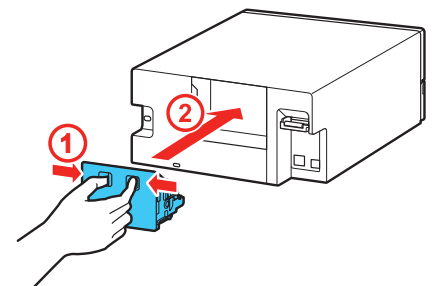
Caution: The printer ships with the transportation lock in the printing position. Do not move it from the printing position unless you need to transport it.

Note: The shape, number, and position of the protective materials is subject to change without notice.

6 Close the inner cover, then slide the interior unit back into the printer.



7 Reattach the rear cover.

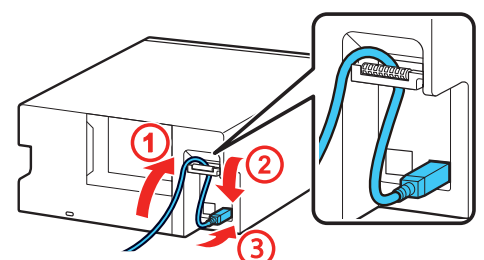


Connect a USB or Ethernet cable

If you are setting up the printer for use with a USB or Ethernet connection, follow the steps below to prevent the interface cable from getting unplugged when extending the interior unit. Some printer operations, such as ink charging, require the printer's interior unit to be extended. If you plan to use the printer with a wireless connection, go to the "Fill the ink tanks" section.

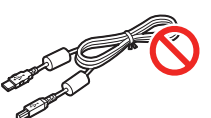
Note: Make sure the interior unit is fully inserted.

1 Pass a USB or an Ethernet cable through the cable support and connect it as shown.

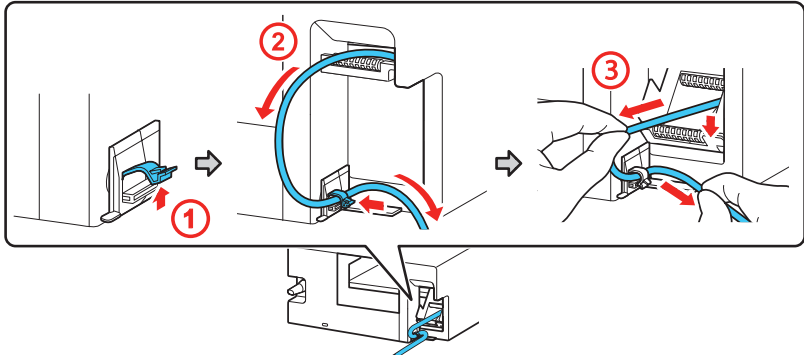


Note:

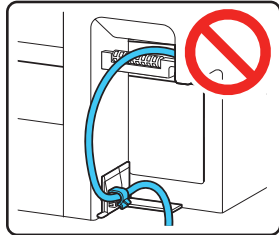
- Do not use a USB cable with ferrite cores.
- Do not connect your printer to your computer yet.



2 Open the cable holder located on the back of the printer, then pass the cable through the path as shown below. Pull the cable until the cable support is lowered, as shown below.



Note: The cable support should remain lowered to ensure that the cable does not get disconnected when pushing in or pulling out the interior unit.



Fill the ink tanks

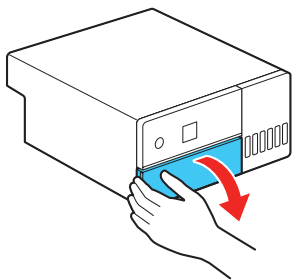
Warning: Keep the ink bottles out of the reach of children and do not drink the ink.

Caution: This product requires careful handling of ink. If ink spills, wipe it off immediately with a damp towel to avoid permanent stains. If ink gets on your clothes or belongings, it may not come off.

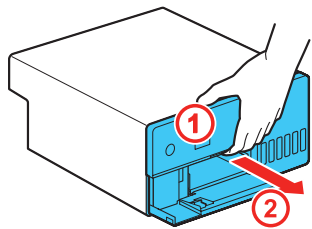
Note:

- Fill the ink tanks before turning on the printer.
- Make sure you have ink bottles available before starting the setup process.
- Part of the ink will be used to charge the printhead. These bottles will print fewer pages compared with replacement ink bottles.
- Epson strongly recommends the use of genuine ink to ensure optimal print quality and performance.

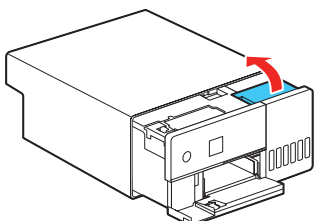
1 Open the printer's front cover.



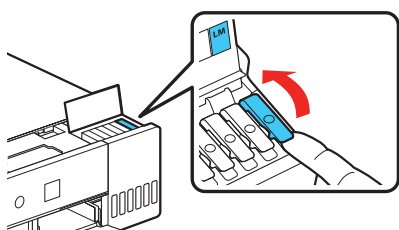
2 Hold the control panel as shown and pull out the interior unit until it stops.



3 Open the ink tank cover.

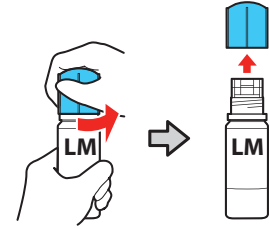


4 Open the cap for the Light Magenta (LM) ink tank.



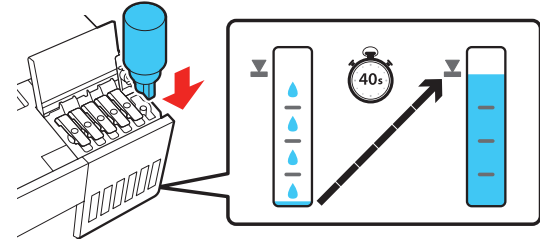
Note: Refer to the color-coded sticker on the ink tank unit to identify the color of each tank.

5 Unpack the Light Magenta (LM) ink bottle. Hold the ink bottle upright and slowly turn the bottle cap to remove it.



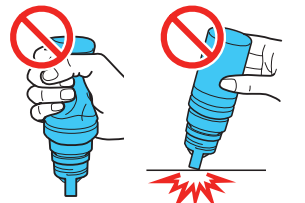
Caution: Do not shake or squeeze the ink bottle. Do not touch the top of the ink bottle after its cap is removed.

6 Insert the ink bottle into the filling port.



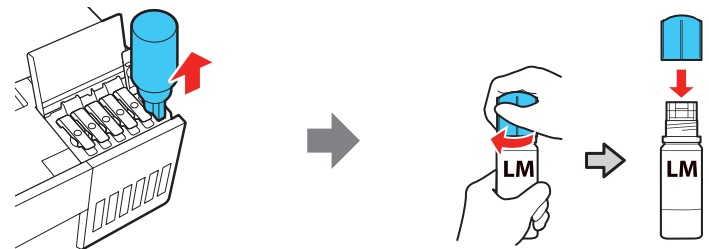
Note: Do not force the bottle into position; each bottle is keyed for each color.

7 Wait for the ink to fill the tank. Do not squeeze the bottle or allow it to contact any other surface.



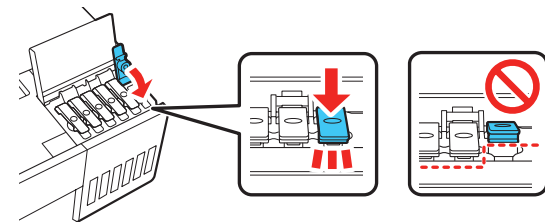
Note: Ink flows into the tank and stops automatically when the ink tank is filled to the upper line. If ink does not flow from the bottle, lift and reinsert the bottle.

8 When the ink tank is full, remove the ink bottle and securely close it with the bottle cap. If any ink remains in the bottle, store it for later use.



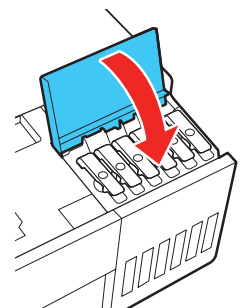
Note: Do not leave the ink bottle inserted; otherwise the bottle may be damaged or ink may leak. Once the ink tank is full, do not remove and reinsert the ink bottle or ink may spill.

9 Securely close the Light Magenta ink tank cap.

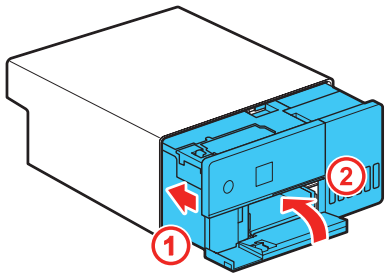


10 Repeat steps 4 through 9 for the other colors.

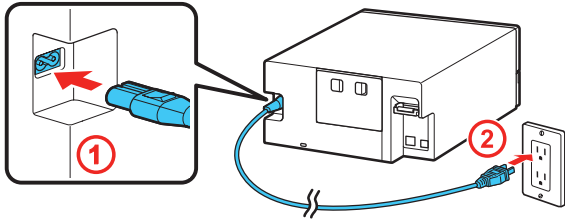
11 Close the ink tank cover.





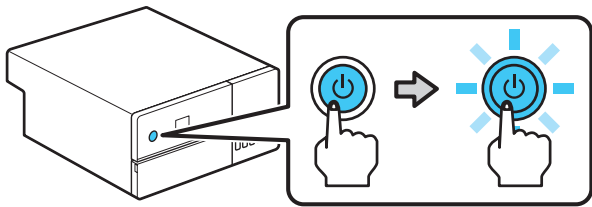
- 12** Slide the interior unit back into the printer, then close the front cover.



- 13** Connect the power cord.



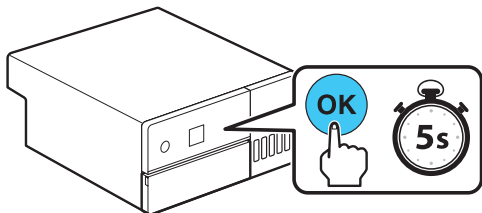
- 14** Press the  power button to turn on the printer. The  power light flashes.

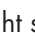


- 15** Select your language, date, time, and unit settings.

Note: You can change these settings later using the product's control panel. For more information, see the online *User's Guide*.

- 16** When the message to see the Setup Guide to complete installation appears on the LCD screen, follow the on-screen instructions. When prompted, press the **OK** button for 5 seconds to start charging the ink. Ink charging takes approximately 6 minutes.



Note: When the  power light stops flashing, ink charging is complete. Once initial setup of the printer is complete, you can top off the ink tanks with any remaining ink. See the online *User's Guide* for instructions.

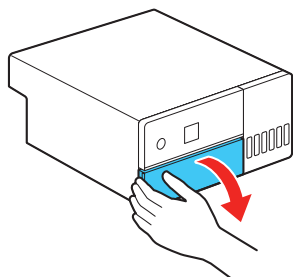
Caution: Do not unplug or turn off the product while the product is charging or you'll waste ink.

- 17** Press the **OK** button as prompted when ink charging is complete.

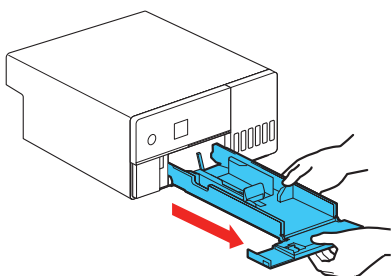
Load paper

The printer can be used with 3.5 × 5-inch (9 × 13 cm) or 4 × 6-inch (10 × 15 cm) sheets of photo paper. See the online *User's Guide* for information about loading capacity and available paper types.

- 1** Open the front cover.

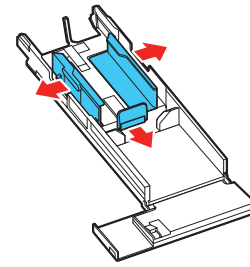


- 2** Pull out the paper cassette.

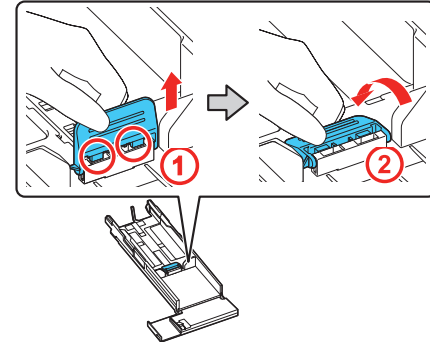


Note: Use both hands when pulling the paper cassette out to avoid dropping it.

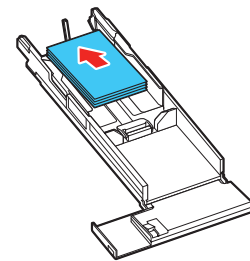
- 3** Slide the edge guides all the way out.



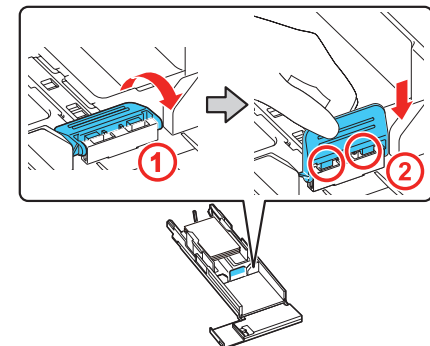
- 4** Lift the front edge guide until you see the two tabs on the bottom, then lower it, as shown.



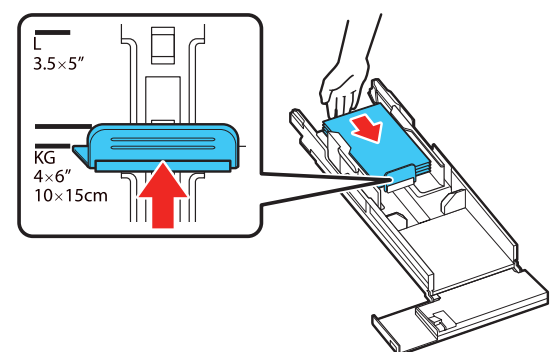
- 5** Load paper with the printable side up and short edge first in the paper cassette, then slide the side edge guides against the paper, but not too tightly.



- 6** Raise the front edge guide and insert the two tabs into the slots.

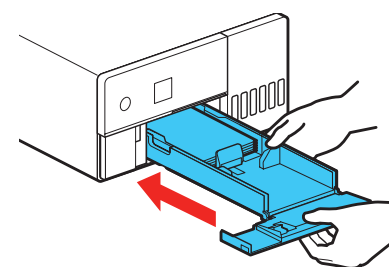


- 7** Slide the front edge guide to the paper size indicator for the paper you loaded, then tap the paper against the front edge guide.



Note: Make sure the paper stack is even to avoid paper feeding problems.

- 8** Slide the paper cassette all the way into the printer.



- 9** Set the paper size and paper type on the LCD screen, then highlight **Close** and press the **OK** button to confirm your selection.

Install software

Note: An internet connection is required to obtain the product software.

- 1 Make sure the product is **NOT CONNECTED** to your computer.
Windows®: If you see a Found New Hardware screen, click **Cancel** and unplug the USB cable.
- 2 Download and run your product's software package. For the latest software, visit <http://epson.com/support/sld570> (U.S.), <http://epson.ca/support/sld570> (Canada), or <http://latin.epson.com/support/sld570> (Latin America).
- 3 Follow the instructions on the computer screen to run the setup program.

Mobile printing

Connect wirelessly from your smartphone, tablet, or computer.

- Print directly from your Android™ (v4.4 or later) device*. Simply connect your printer and device to the same network and tap the menu icon to select the print option.
- Turn your mobile device into an intuitive, easy-to-use printing control center with Epson Smart Panel®. Download the app from your mobile device's app store.

* May require the Epson Print Enabler or Mopria® Print Service app from Google Play™.

Using the Maintenance Tool

Open the Maintenance Tool software utility to perform the following maintenance tasks:

- **Diagnostic Cleaning** – Detects clogged nozzles and automatically performs cleaning
- **Forced Cleaning** – Performs manual cleaning
- **Nozzle Check** – Checks for clogged nozzles

Note: See the online *User's Guide* for details on using the Maintenance Tool utility.

Product support

Epson technical support

Visit <http://epson.com/support/sld570> (U.S.), <http://epson.ca/support/sld570> (Canada), or <http://latin.epson.com/support/sld570> (Latin America) to download software and utilities, view manuals, get FAQs, or contact Epson.

Epson provides technical support and information on the installation, configuration, and operation of professional printing products through your Epson limited warranty. Dial (888) 377-6611, 7 a.m. to 4 p.m., Pacific Time, Monday through Friday. Days and hours of support are subject to change without notice. Before you call, make sure you have your:

- Printer serial number: _____
- Proof of purchase and date: _____

Note: If you experience difficulty with the toll-free line, call (562) 276-1305.

In Latin America, see the online *Notices* for technical support information.

Online guides

Instructions for using your printer and maintenance tools.

Recycling

Epson offers a recycling program for end of life hardware and ink bottles. Please go to <http://epson.com/recycle> (U.S.) or <http://epson.ca/recycle> (Canada) for information on how to return your products for proper disposal.

Need ink or paper?

Ensure brilliant results with Epson® specialty and plain papers, engineered specifically for Epson printers. Find Epson papers and Epson Genuine Ink at <http://epson.com> (U.S. sales) or <http://epson.ca> (Canadian sales) and at Epson authorized resellers. Call 800-GO-EPSON (800-463-7766).

In Latin America, go to <http://latin.epson.com> for purchase information.

SL-D570 replacement ink bottles

Color	Part number
● Black	T54C1
● Cyan	T54C2
● Magenta	T54C3
● Yellow	T54C4
● Light Cyan	T54C5
● Light Magenta	T54C6

EPSON, Epson Smart Panel, and SureLab are registered trademarks and EPSON Exceed Your Vision is a registered logomark of Seiko Epson Corporation.

Mac is a trademark of Apple Inc., registered in the U.S. and other countries.

Android and Google Play are trademarks of Google LLC.

Windows is a registered trademark of Microsoft Corporation in the United States and/or other countries.

Mopria® is a registered trademark of Mopria Alliance, Inc. in the United States and other countries.

General Notice: Other product names used herein are for identification purposes only and may be trademarks of their respective owners. Epson disclaims any and all rights in those marks.

This information is subject to change without notice.

© 2023 Epson America, Inc., 1/23

Printed in U.S.A.

CPD-63229